

## Reliance™-LT Curtain Wall— by Oldcastle BuildingEnvelope®

**Reliance™-LT Curtain Wall** is a zone glazed system that is easy to install and features **exceptional water control along with outstanding thermal performance**. Reliance™-LT is offered as a 1" infill system, with snap-in adaptors to accommodate 1/4" infill for spandrel applications. Reliance™-LT is thermally broken utilizing an EPDM push-in thermal isolator. The system features a 2" sight line and is **available 6" and 7-1/4" depths**.

The Reliance™ family of curtain wall products include multiple tiers of thermal and installation options.

For your next curtain wall application choose from the wide range of Reliance™ options by Oldcastle BuildingEnvelope®.

### Features

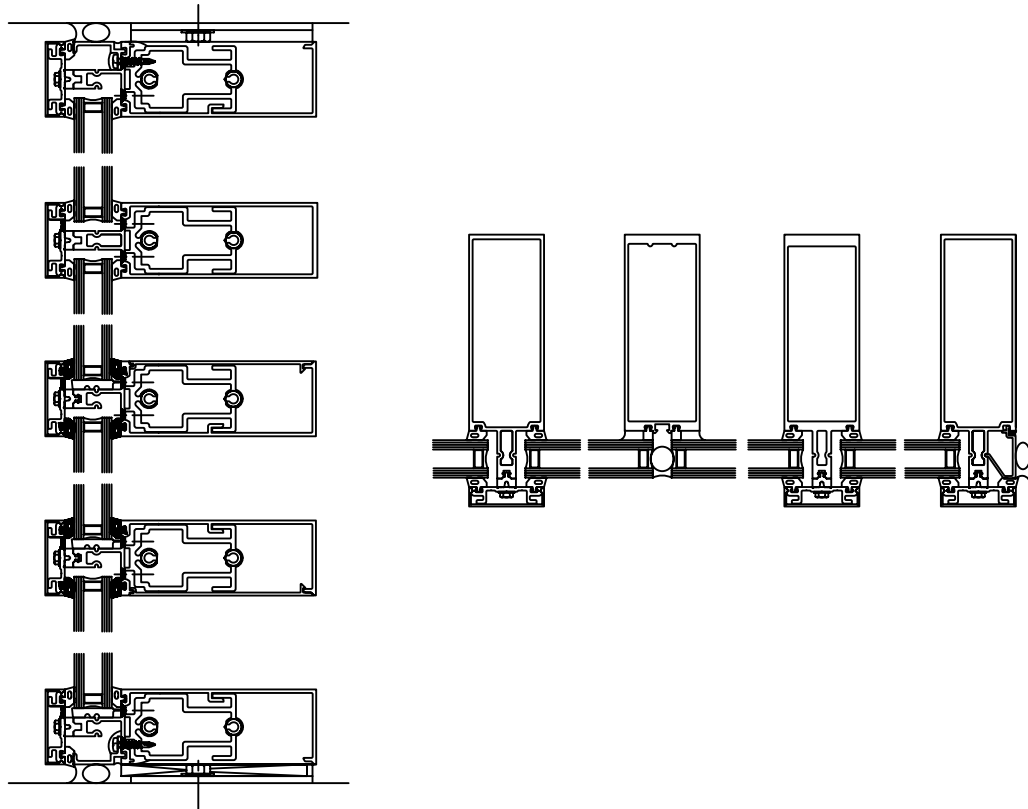


Lewis Communications, Birmingham, AL  
Architect: Williams Blackstock Architects

- 2" sight line and multiple system depths for structural as well as aesthetic requirements.
- Can be installed using either captured or structural silicone-glazed vertical mullions.
- Polyamide pressure plate available for high thermal installations.
- Integration of the Solar Eclipse sun control product offering a wide range of engineering options.
- Low profile corner mullions.
- Heavy duty mullion and aluminum structural reinforcements for higher design criteria
- Accommodates Signature Series ZeroSightline-HT projected and casement vents
- Accommodates low profile door frames for entrance doors
- Factory-painted KYNAR 500/HYLAR 5000 finishes, meeting all provisions of AAMA 2605
- Factory-anodized finishing



Standard Details



Performance

- Air Infiltration: <.06 CFM/sq.ft. (6.24 PSF) per ASTM E283
- Static Water: 15 PSF per ASTM E331
- Dynamic Water: 20 PSF per AAMA 501.1
- Deflection Load: 40 PSF per ASTM E330
- Structural Load: 60 PSF per ASTM E330
- Seismic: Three levels of deflection per AAMA 501.4
- Vertical Inter-Story Drift: 1/2" movement per AAMA 501.7
- STC: 32 (1/4" - 1/2" - 1/4" glazing)  
37 (1/4" lam - 1/2" - 1/4" lam glazing)
- Thermal performance per AAMA 1503 for Sunglass Low-E:
  - U-factor = .42
  - CRF frame = 68
- NFRC certified
- Thermal Performance Characteristics per AAMA 507