

Reliance™ Window Wall— Thermal Structural Tape Glazed unitized Window Wall system

The **Reliance™ Window Wall** from Oldcastle BuildingEnvelope® is a factory assembled, sealed and glazed window wall product offering both Captured and Non-Captured options with a variety of 1" infill options. This screw spline assembly has square cut components to reduce fabrication and utilizes 3M's™ structural glazing tape in lieu of silicone to reduce glazing labor. The Reliance™ Window Wall design has reinforced polyamide thermal struts integrated into the head/sill cans to provide exceptional thermal performance. **One of the most outstanding benefits of Reliance™ Window Wall is the assembly and glazing of the window wall frames** under factory controlled conditions. This reduces field labor and minimizes on site applied seals. The system is also designed to be installed from inside the building which is an easier installation and eliminates the need for staging equipment during unit installation.



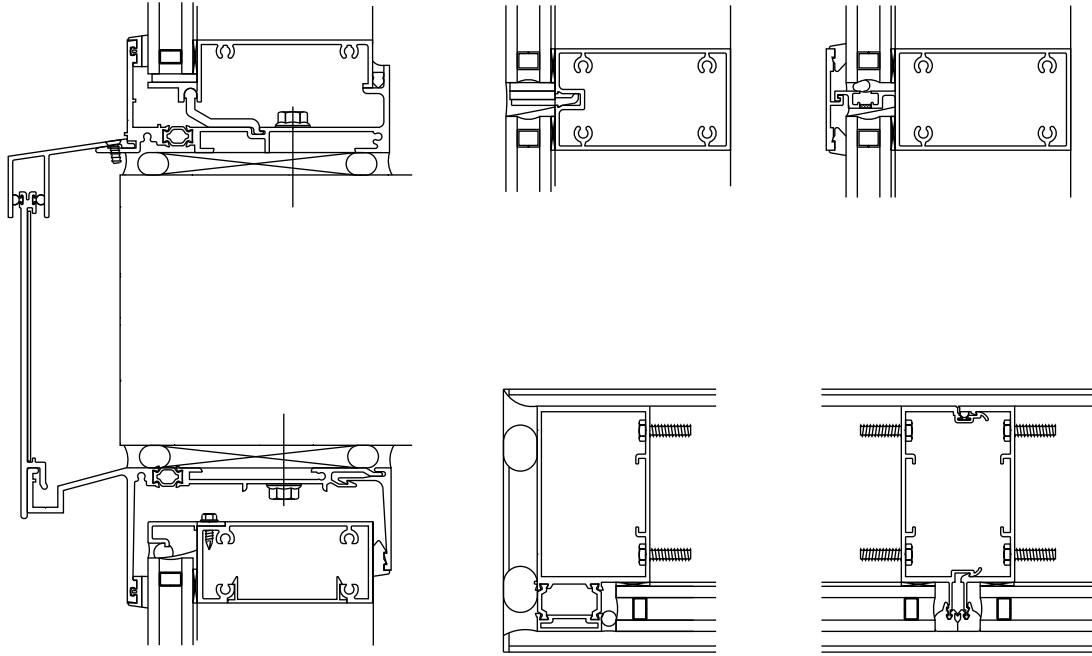
AC Hotel By Marriott, Raleigh, NC
Architect: DRL Group

Features

- Overall system dimensions:
2-1/2" (63.5mm) x 5" (127mm) Vertically
2-1/4" (57.15mm) x 5" (127mm) Horizontally
- +/-1/2" total allowable vertical movement per floor
- Factory assembled, sealed and glazed
- Installed from floor slab; staging not required
- Reduced field labor
- Enhanced thermal performance with reinforced polyamide struts in the head/sill cans.
- Standardized detailing and components
- Dual finish capability
- Accepts steel reinforcing for various requirements
- Accommodates operable vents for both captured and Non-Captured system options
- Factory painted KYNAR 500/HYLAR 5000 finishes, meeting all provisions of AAMA 2605
- Factory anodized finishing



Details



See OBE Website for All Standard Details

Performance

- Air Infiltration: <.06 CFM/SQ.FT @ 6.24 PSF per ASTM E283
- Static Water: 15 PSF per ASTM E331
- Dynamic Water: 15 PSF per AAMA 501.1
- Deflection Load: 40 PSF per ASTM E330
- Structural Load: 60 PSF per ASTM E330
- Seismic: Three levels of deflection per AAMA 501.4
- STC per ASTM E90:
39 w/laminated glass
34 w/clear glass
- OITC per ASTM E90:
31 w/laminated glass
29 w/clear glass
- Thermal Performance per AAMA 1503
using Low-E 1" insulating glass: U-factor: .35
- CRF Frame: 70
- NFRC Certified & Thermal Performance
Characteristics per AAMA 507